



# INDOFINE Chemical Company, Inc.

121 Stryker Lane, Bldg. 30, Suite 1 • Hillsborough, NJ 08844 • U.S.A.

Phone: (908) 359-6778 • FAX: (908) 359-1179

website: [www.indofinechemical.com](http://www.indofinechemical.com)

e-mail: [chemical@indofinechemical.com](mailto:chemical@indofinechemical.com)

## CERTIFICATE OF ANALYSIS

Catalog Number: 06-662

Product Name: **GYPENOSIDE XVII**  
(Gynosaponin S)

CAS Number: [80321-69-3]

Lot Number: 1603752

Chemical Formula:  $C_{48}H_{82}O_{18}$

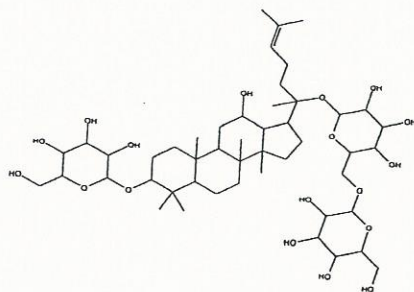
Molecular Weight: 947.16

Appearance: White powder

Loss on drying: 1.2%

Storage: Store in a cool, dry place. Protect from light.

Purity(HPLC): 99.64%





# INDOFINE Chemical Company, Inc.

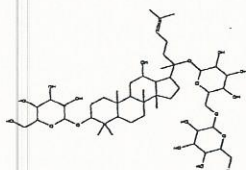
121 Stryker Lane, Bldg. 30, Suite 1 • Hillsborough, NJ 08844 • U.S.A.

Phone: (908) 359-6778 • FAX: (908) 359-1179

website: [www.indofinechemical.com](http://www.indofinechemical.com)

e-mail: [chemical@indofinechemical.com](mailto:chemical@indofinechemical.com)

## HPLC ANALYSIS

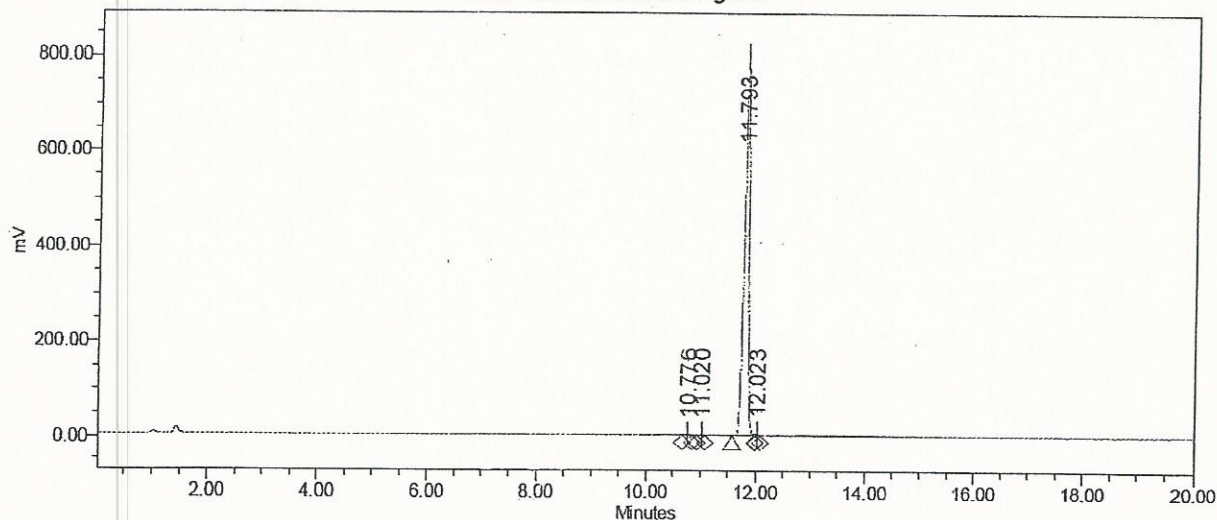


Catalog No.: 06-662  
Product Name: Gypenoside XVII  
Lot No.: 1603752

### SAMPLE INFORMATION

Sample Name:	Gypenoside XVII	Acquired By:	System
Sample Type:	Unknown	Sample Set Name:	
Vial:	13	Acq. Method Set:	Gypenoside XVII
Injection #:	1	Processing Method:	Samples
Injection Volume:	10.00 ul	Channel Name:	SATIN
Run Time:	20.0 Minutes	Proc. Chnl. Descr.:	

Auto-Scaled Chromatogram



#### Peak Results

Name	RT	Area	% Area	USP Plate Count	USP Resolution
1	10.776	3897	0.08	36648.48	
2	11.020	3983	0.09	122775.74	1.50
3	11.793	4613323	99.64	98206.35	5.48
4	12.023	8884	0.19	166069.51	1.44